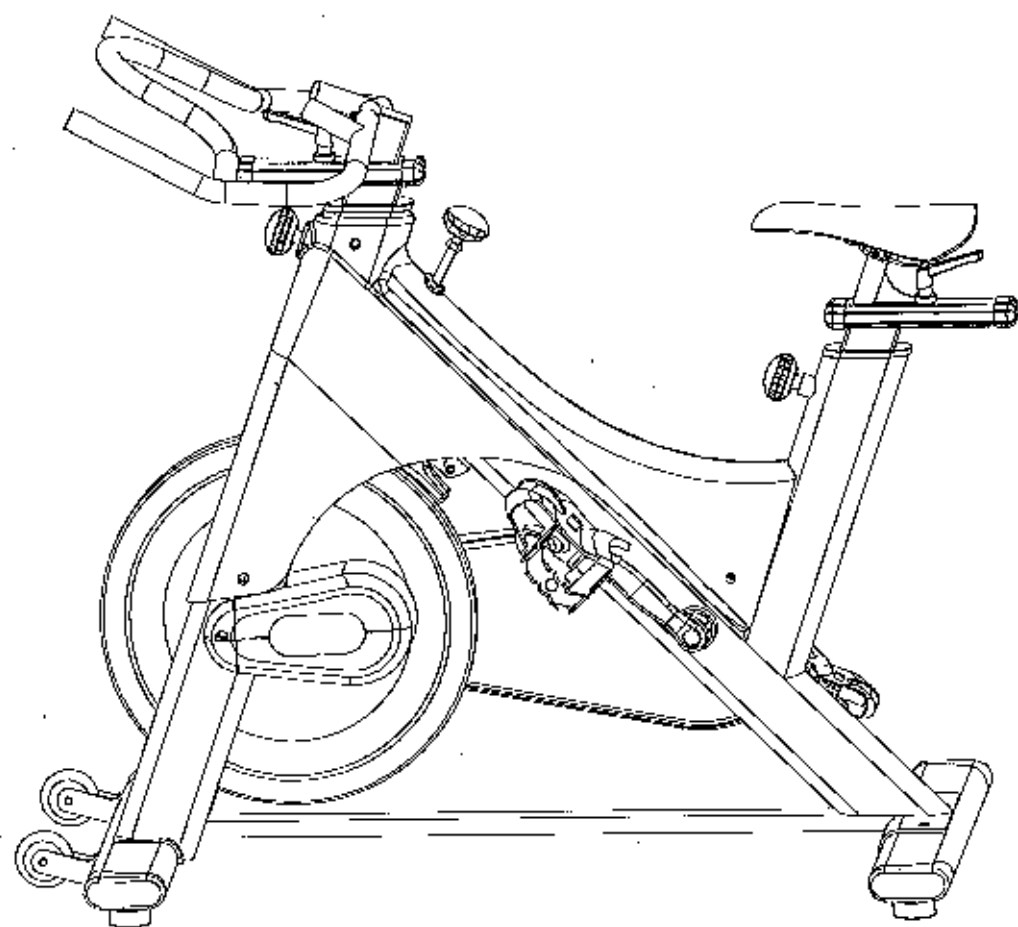
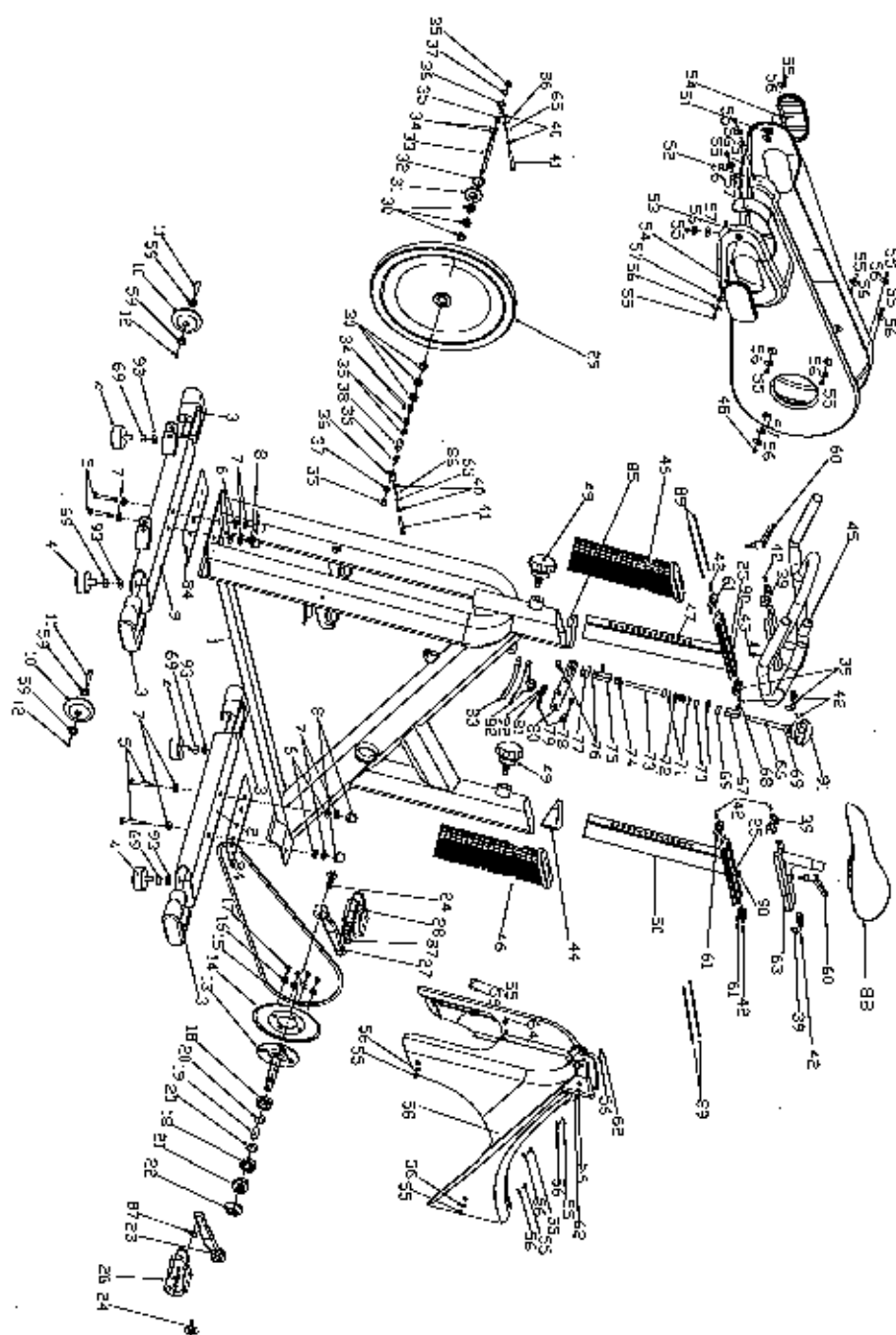


PR-S90 SPINNING BIKE





SB-530C PARTS LIST

NO.	DESC.	SPEC.	Q'TY	NO.	DESC.	SPEC.	Q'TY
1	MAIN FRAME		1	48	BOLT	M5*9	1
2	REAR STABILIZER	40*97*2.0*498	1	49	ADJUSTABLE KNOB		2
3	REAR STABILIZER CAP	40*97 ABS	4	50	SEAT POST	30*60*1.8*280	1
4	ROUND FOOT	M10*45*50	4	51	CHAIN COVER L	SPIN BIKE 左709*261	1
5	HEX HEAD BOLT	M10*60	4	52	CHAIN COVER R	SPIN BIKE 右715*269	1
6	WASHER	10*26*2	4	53	FRONT CAP	248*138 ABS	1
7	WASHER	10*26*2	8	54	PROTECT CAP	53.5*118/TPR	2
8	NUT CAP	M10	4	55	BOLT	5*16	17
9	FRONT STABILIZER	40*97*2.0*498	1	56	WASHER	5*10	19
10	PU WHEEL	Φ58*20	2	57	WASHER	6*12	4
11	BOLT	8*30*M8	2	58	PROTECT CAP FOR MAIN	L/R	2
12	BOLT	M6*12	2	59	BEARINGS	608Z	4
13	PULLEY AXLE	25*124	1	60	ADJUSTABLE KNOB		2
14	PULLEY	Φ210	1	61	LOWER CAP		4
15	BELT	550EL	1	62	BOLT	5*7	2
16	SPRING WASHER	10	4	63	U-BAR FOR SEAT		1
17	BOLT	10*15	4	64	BOLT	4*10	1
18	BEARINGS	6004ZZ SKF	2	65	WASHER	8*19	2
19	SPACER	20.1*24*37	1	66	BRAKE BOLT	10*133	1
20	BEARINGS SPACER	Φ38*Φ48*12	2	67	BRAKE NUT	16.8*16.8*31	1
21	NYLOCK NUT	M20*P1.0	1	68	BOLT	M5*5	2
22	PLASTIC CAP	42*13	1	69	NUT	M10*P1.5	6
23	CRANK L	170 SPINBIKE	1	70	NUT	M8	1
24	BOLT	8*20	2	71	ROUND STEEL-PLATE	16.8*3	2
25	NUT	17.5*8*M6	2	72	SPRING	2*16*30	1
26	PEDAL L	D10	1	73	BOLT	10*101.5	1
27	CRANK R	170 SPINBIKE	1	74	SPRING	1.5*15*25	1
28	PEDAL R	D10	1	75	NUT	16.8*16.8*25	1
29	FLYWHEEL	21kg	1	76	NUT	M8*P1.25	2
30	BEARINGS	6001ZZ SKF	6	77	BRAKE ADJUST PIN	20*30	1
31	BELT WHEEL		1	78	NUT	M8	1
32	STEEL-PLATE	Φ42.5*4 SPHC	1	79	BOLT	M6*20	2
33	FLYWHEEL AXLE	14*185 SCM415	1	80	U-TUBE	30*3*66.5	1
34	WASHER	12.2*16.8	4	81	SPACER	Φ6.2*Φ10*6.2	2
35	NYLOCK NUT	M12*P1.5	6	82	FIXED CLIP	25*112	1
36	ZIP	19*4	2	83	STRAP	25*7*115	1
37	WASHER	13*20*2	2	84	WASHER	176*59*1.5 PVC	2
38	FLYWHEEL SPACER	12.25*16*11	1	85	RUBBER PAD	12*92	1
39	CAP		4	86	WASHER	Φ8*Φ18*1.0	2
40	NUT	M8*P1.25	4	87	WASHER	14*20*0.5	2
41	BOLT	M8*50*P1.25	2	88	SEAT	3125	1
42	BOLT	M4*10	8	89	ROLL	3.2*3.2*190	4
43	BOLT	M8*20	2	90	SPRING	10*10*1.0	2
44	SEAT	8*92	1	91	BRAKE KNOB		1
45	HANDLEBAR		1	92	NUT	M6	1
46	BUSHING	36*93*259	2	93	WASHER	10*26*1.5	4
47	UPPER UPRIGHT POS	30*60*1	1	94			



4 X

Hex head bolt 10*60 (5)



4 X

Nut cap M10 (8)



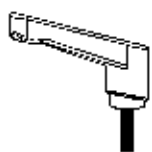
8 X

Plastic washer 10*26*2 (6)



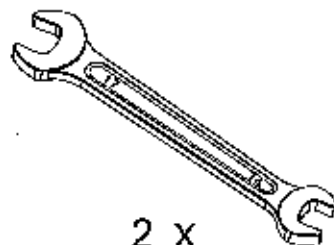
8 X

Flat washer 10*26*2 (7)



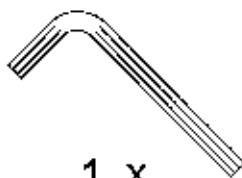
1 X

Adjustable knob (60)



2 X

14 # X17# Screw Driver



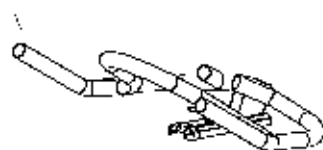
1 X

M3 Allen wrench

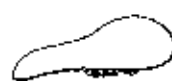


1 X

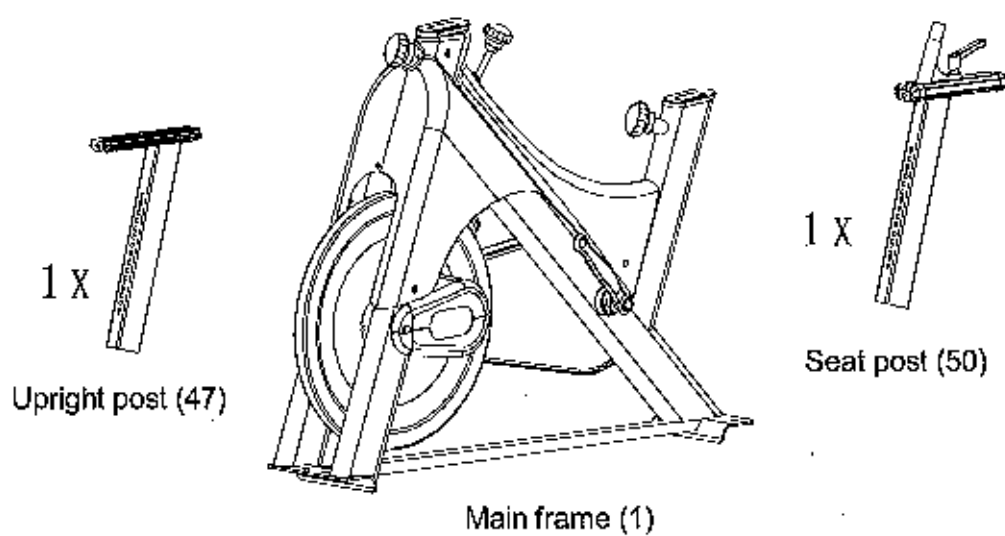
13# X15# Screw Driver



1 X
Handle bar (45)



1 X
Seat (88)

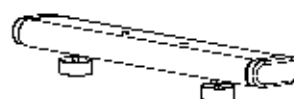


1 X
Upright post (47)

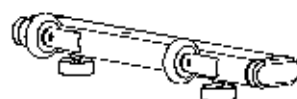
1 X
Seat post (50)

Main frame (1)

2 X
Pvc plate (84)



1 X
Rear stabilizer (2)



1 X
Front stabilizer (9)

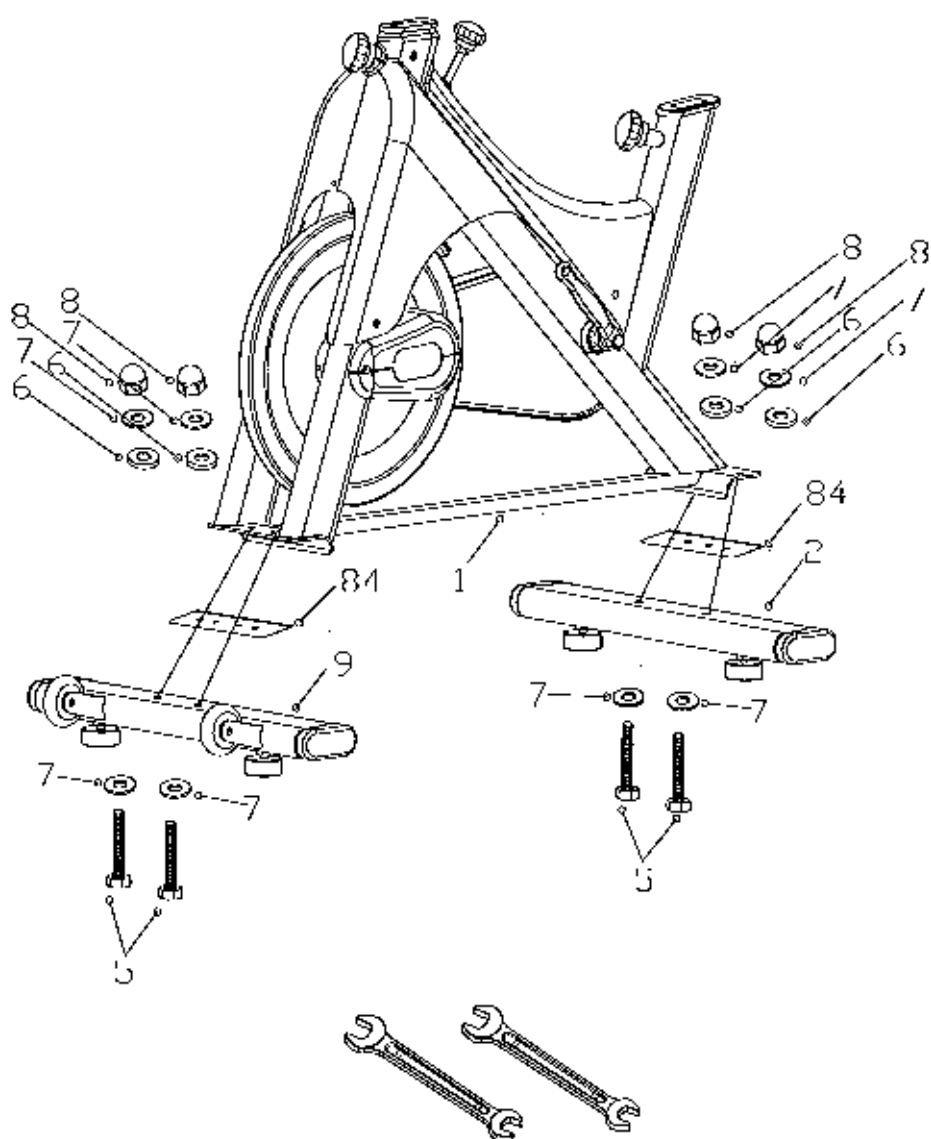


1 X
Pedal (26&28)

1

step1.

Attached the stabilizer (9&2) to the main frame(1).through the pvc plate (84).and fixed with hex head bolt (5).washer(7) .plastic washer(6)& nut cap(8).by screw driver.

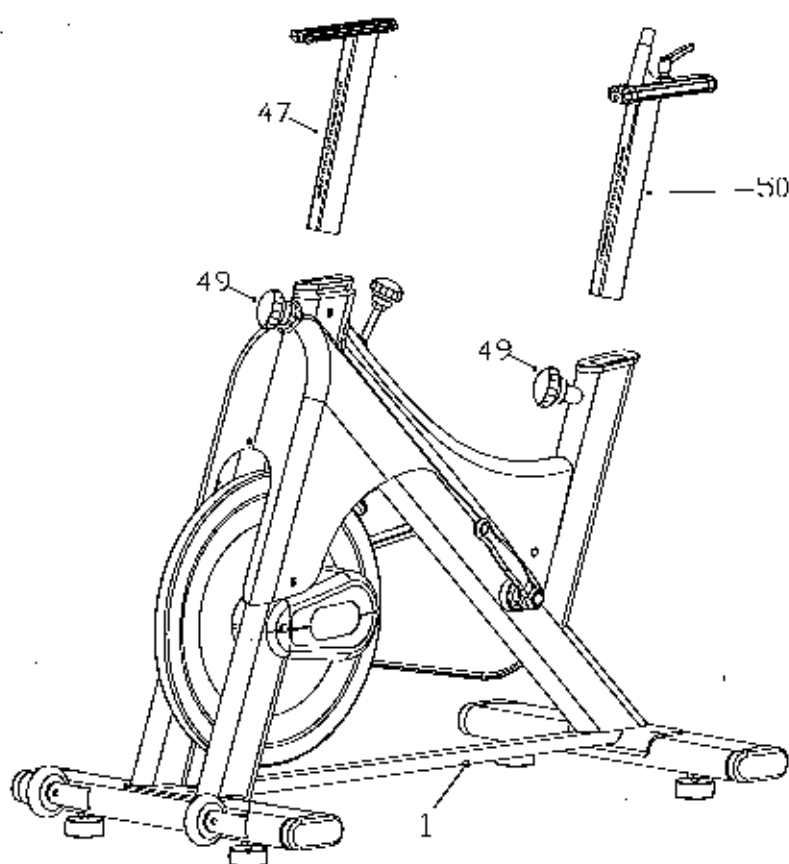


14#X17#Screw Driver-2 pcs

2

step 2.

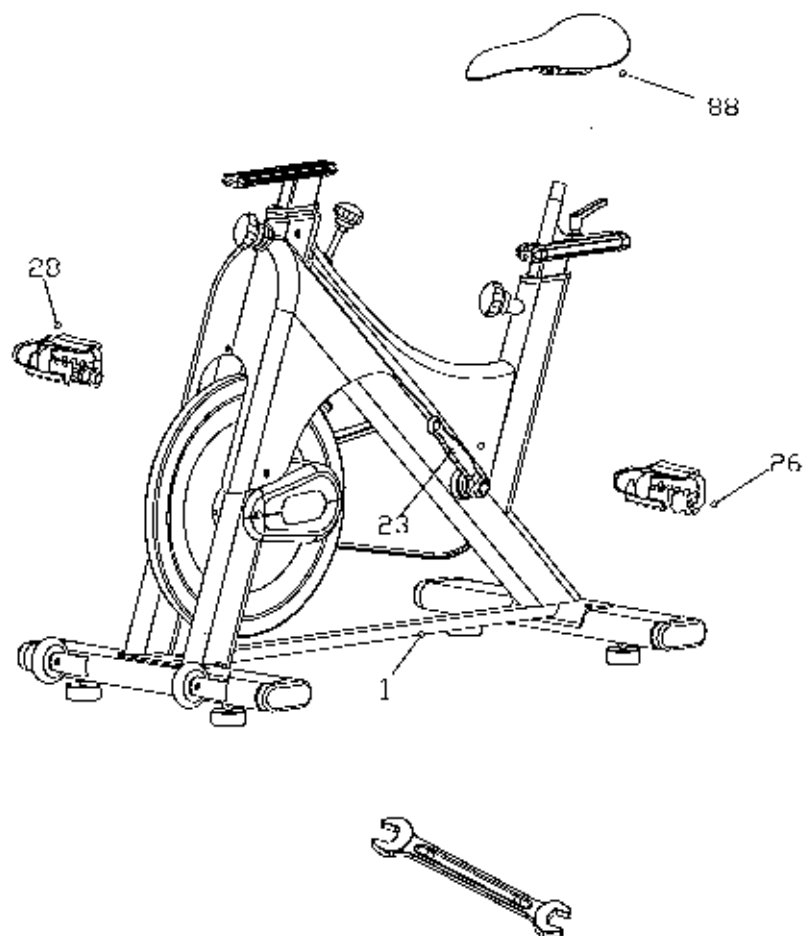
Loosen the adjustable knob(49),and insert the upright post(47) and seat post (50) into main frame(1),then fixed tightly the adjustable knob(49).



3

step 3.

Attach the pedal (26&28) to the crank (23).and fixed seat(88) to the seat adjust tube (63).with screw driver

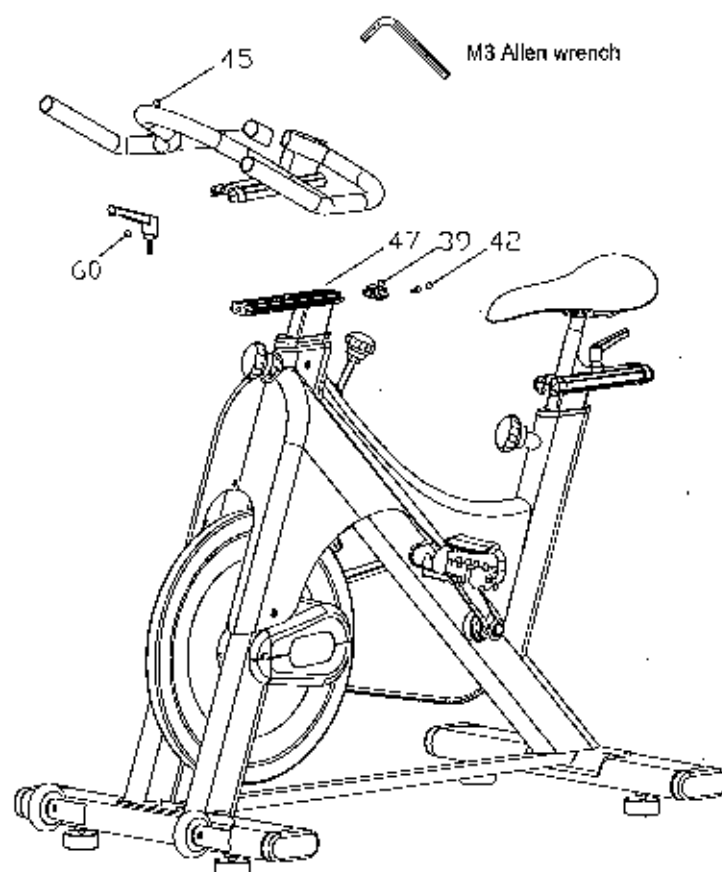


13#X15#Screw Driver

4

step 4.

Attach the handlebar (45) to the upright post (47) and fix with plastic cap (39), bolt (43) & adjustable knob (60).



Important Safety Information

WARNING: Before starting any exercise program, it is recommended that you consult your physician. Before using your new exercise bike, please review this manual to learn about the unit's features, functions, and safe operation.

SAFETY TIPS and PRECAUTIONS:

1. It is the owner's responsibility to ensure that all users of this equipment are thoroughly informed of all Warnings and precautions. Use this exercise bike only for its intended use as described in this manual.
2. The exercise bike should be used on a level surface.
3. Never leave children unsupervised near this exercise bike.
4. Your exercise bike is designed for indoor use only.
5. This exercise bike is intended for home-use only. Any commercial use voids all warranties, expressed and implied.
6. Keep the control panel out of direct sunlight.
7. Never use your exercise bike around water or while you are wet. Using the unit around a pool, hot tub, or sauna will void the warranty and is potentially hazardous.
8. Appropriate clothing should be worn while using the exercise bike. Never wear loose clothing that could be caught in moving parts. It is recommended that athletic support clothing be worn for both men and women. Athletic shoes should always be worn. Do not use the exercise bike with bare feet, wearing sandals, or wearing socks or stockings.
9. No more than one person should ever operate the exercise bike at one time.
10. Always examine your exercise bike before using to ensure all parts are in good working order.
11. To avoid any possibility of being struck by or caught between moving parts. Bystanders should not be within reach of the exercise bike while it is in motion.
12. Pets should not be allowed on or near your exercise bike.

